

Holland Pavers

No other paver can duplicate the classic appearance and style of the Holland Paver. Our



Hollands are 2 3/8" tall by 4" wide and 8" long. This paver has a smooth top with a defined bevel along the top outside edge.

Running Bond, Herringbone and Basket Weave are popular installation patterns for the Holland Paver.

Stock Colors:
Gray, Red, Tan,
Red/Black,
Tan/Brown
& Charcoal

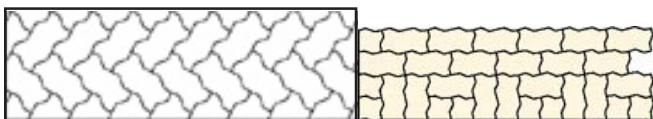


Serpentine Paver



This interlocking paver is both attractive and durable. Manufactured 3 1/8" tall, this paver can be used for anything.

Pavers out perform poured concrete and asphalt in many ways. Driveways or heavy wheel traffic areas are among them. Pavers move rather than crack like poured concrete and they are more resistant to "ruts" as develop in asphalt. The Serpentine Paver comes in the four colors shown above.



Installation ~ Hire a contractor or do-it-yourself?

Installing a paver patio requires accurate excavation, placement of four inches of a compacted base followed by one inch of screeded-level bedding sand. Only then can you begin carefully installing the pavers making sure not to disturb the screeded sand. Because of the equipment and labor required to install pavers properly, many homeowners hire contractors to do the work. On large jobs such as driveways or parking lots, hiring a contractor is recommended. Smaller jobs like patios and walkways are within a motivated homeowner's abilities. For detailed instruction on how to install pavers or patio stones, check out www.icpi.org. The Interlocking Concrete Pavement Institute, ICPI is the authority on pavers their use and installation. Their website will provide a wealth of information about the benefits of interlocking concrete pavements.

The ICPI specifies using Concrete Sand for both the bedding sand and the sand that is applied to the top of the installed pavers and swept into the gaps between the pavers to lock them together. St. Vrain offers 70 pound bags of concrete sand. Each bag contains .73 cubic feet.



Paving Stones



St. Vrain Block Company manufactures high-quality concrete products. After 60 years, we have the most diverse manufactured concrete product line available.

St Vrain Block Company

www.stvrainblock.com

303-833-4144

5150 Grand View Blvd

Dacono, CO 80514



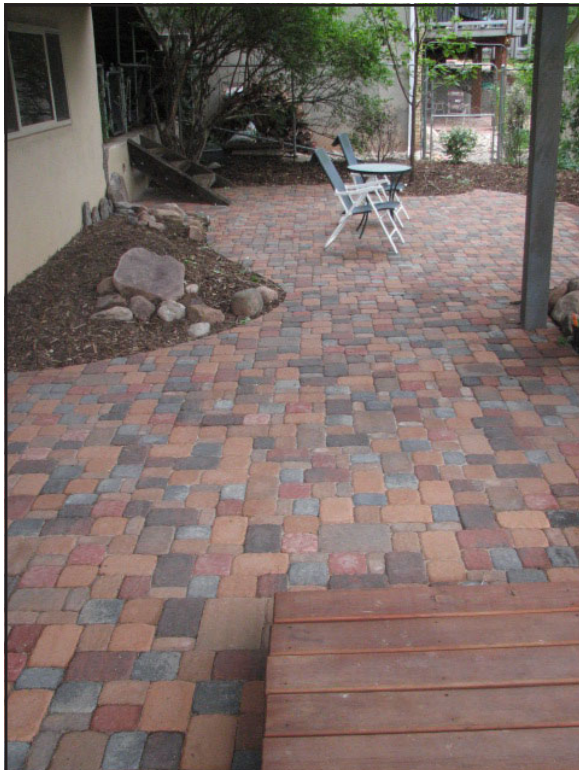
Dublin Pavers

The multisize paver system



Multipart paver systems are the most popular systems on the market today. In the United States, interlocking concrete paving stones gain greater market share every year. They have been a favorite paving method in Europe for centuries. Pavers offer customers the widest range of surface finishes, colors, shapes and sizes. Unlike poured concrete, a paver patio or driveway can be repaired easily by removing the damaged pavers and replacing them with new ones. Pavers also allow the do-it-yourselfers to roll up their sleeves and tackle the installation project themselves, whereas other paving systems require heavy equipment and professionals. The winter durability of pavers is also superior to other pavement types because of their ability to heave rather than crack.

The Dublin Paver System is made up of five stones, each are 2 3/8" tall but all are a different length and width. The shapes and sizes are profiled below along with some layout and pattern designs. Each pallet of Dublin Pavers has roughly 90 square feet coverage. The Running Bond and Random Rows patterns are not intended for use in driveways, but for foot traffic only. Our pavers exceed the specifications outlined in ASTM C 936 and should provide a lasting beauty to any patio or driveway.



Above photo shows the Random Pattern

	<p>Giant Rectangle: 8.25" x 11" / 1.59 per sq. ft.</p> <p>Rectangle: 5.5" x 8.25" / 3.17 per sq. ft.</p> <p>Square: 5.5" x 5.5" / 4.76 per sq. ft.</p> <p>Junior Rectangle: 4.0" x 5.5" / 6.55 per sq. ft.</p> <p>Small Rectangle: 2.75" x 5.5" / 9.52 per sq. ft.</p> <p><i>Each paver is 2 3/8" tall</i></p>			
		<p>Running Bond 50% Rectangles & 50% Squares</p>	<p>Herringbone 75% Rectangles & 25% Squares</p>	<p>I Pattern 75% Rectangles & 25% Squares</p>
	<p>Random Rows 34% Squares, 11% Small Rec's, 16% Jr. Rec's, 39% Giant Recs.</p>	<p>Random 48.5% Squares, 21.5% Small Rec's, 30% Jr/ Rec's</p>	<p>Herringbone 60% Rectangles & 40% Squares</p>	<p>Herringbone 67% Giant Rect. & 33% Rectangles</p>