

Brick Pattern

Our Brick Pattern is 2" thick and 18" square. It is bigger and more stout than other brick patterns on the market. Our Brick Pattern covers more square feet per stone and also allows for the impression of 12 bricks in a



basket weave pattern rather than eight. Brick Pattern are available in six colors: gray, red,

tan, black, red/black & tan/brown.

Cobblestone

Our 2" thick by 18" square Cobblestone offers the opportunity for various installation patterns. The impression upon the top mimics a circular cobblestone pattern outlined by a running bond pattern. The pattern in the Cobblestone can be used to create large circles or fans or even a serpentine. With a little creativity, even more patterns can be achieved with this patio stone.

Our Cobblestone is 18" square it covers 2.25 square feet which is better coverage than similar patio stones. We manufacture this product in five colors: gray, red, tan, red/black, tan/brown.



Hexagons

Hexagons are a versatile patio stone. They create stylish patios, walkways and paths. Their shape builds a very stable patio due to the way they interlock and have to be placed off bond. Hexagons and rounds create classic looking paths. Where hexagons have the edge is they can also be used as the patio stone to add a uniform look to landscaping. We offer two sizes of hexagons; a 14" and an 18" both are point to point measurements. From flat to flat, each hexagon measures 2" smaller, (12" and 16"). All



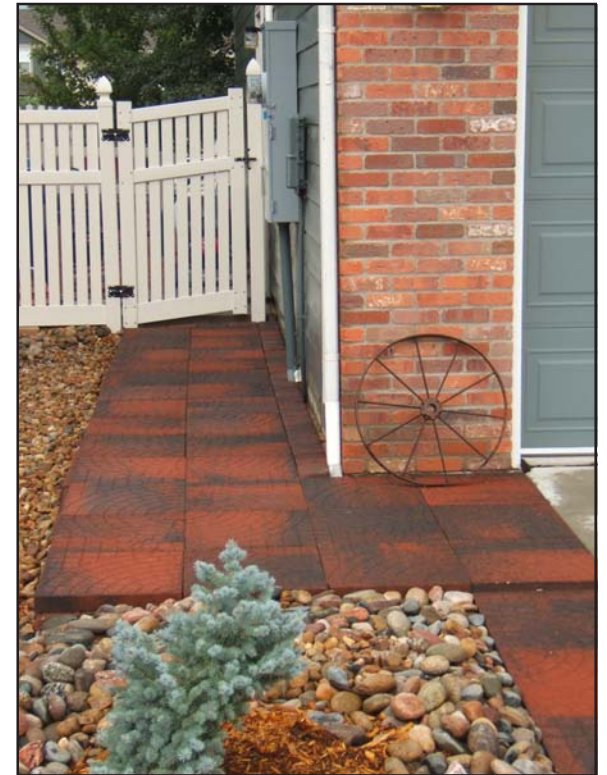
Hexagons are 2" thick and come in four colors: gray, red, tan and black.

Rounds

Rounds are popular for making stepping stone paths. They can be used underneath outdoor planters or to dress up and stabilize other outdoor ornamentation. Our rounds are manufactured 2" thick and come in three sizes. We have a 12", an 18" and a 24" round. The available colors are: gray, red, tan and black.



Patio Stones



St. Vrain
BLOCK
COMPANY

303-833-4144

5150 Grand View Blvd

Dacono, CO 80514

www.stvrainblock.com

Rectangles

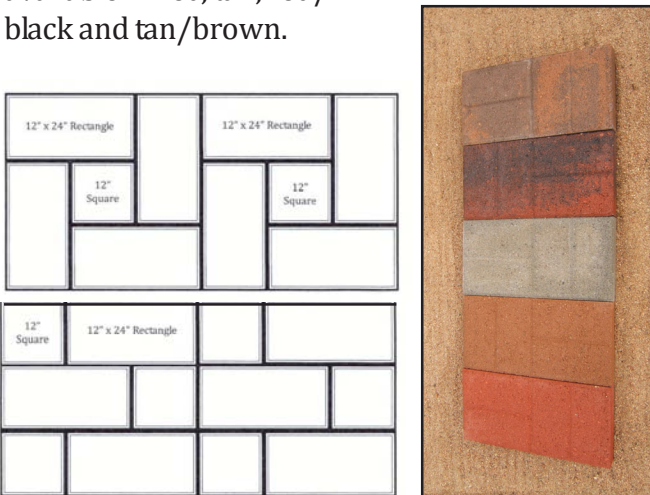
We manufacture three different sizes of rectangles. The largest of the three is 2" x 12" x 24". This rectangle has a beveled edge around a smooth surface like the squares and the rounds.



The 12" x 24" rectangle works in a pattern with several different sizes of squares.

We have a smaller, thinner rectangle, also known as a slab, which is 1 5/8" x 7 5/8" x 15 5/8". This slab is a favorite for building patios quickly and inexpensively. Both the above mentioned rectangles are available in gray, red, tan and black.

Our Slab Brick Pattern, shown below, has four "brick-sized" indentations which are paired up perpendicular to each other to create a basket weave pattern. This 2" x 8" x 16" stone is available in red, tan, red/black and tan/brown.



Squares

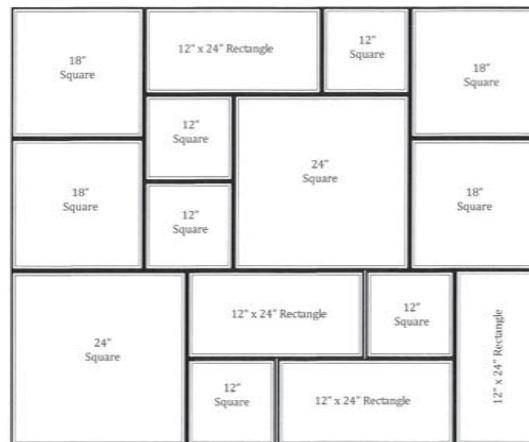
We manufacture four different sizes of squares, a 12", a 16", an 18" and a 24", each are 2" thick. Square patio stones are most popular for backyard patios, walkways, paths, etc. They are not recommended for driveways or heavy wheel traffic. Many patios are installed using



the same size patio stone. An installer can, however, use several sizes of squares and rectangles together, as shown in the patterns in

this brochure. Patio stones are installed using the same method as pavers. Installation requires that there be a compacted base with an inch of concrete sand on top. Levelly place the patio stones on the compacted and level sand. Sweep more sand on over the patio ensuring to fill the space between the stones.

We manufacture our square patio stones in four stock colors; gray, red, tan and black.



Exposed Aggregate

Creating exposed aggregate concrete is a special process where the top layer of cement paste is removed to expose the larger rock in the patio stone. Homeowners and contractors enjoy the unique appearance of the exposed stones in the surface of the patio stone. This manufactured product looks at home in landscaping that is otherwise comprised of natural stone. We manufacture our Exposed Aggregate in many sizes and shapes: 12" square, 14" hexagon, 18" square and 18" round, each are 2" thick. The colors available, gray and tan, are shown in the photo below. All of the sizes and shapes are available in these colors. From full patios to walkways and paths, Exposed Aggregate gives a stylish and authentic look to landscaping.

